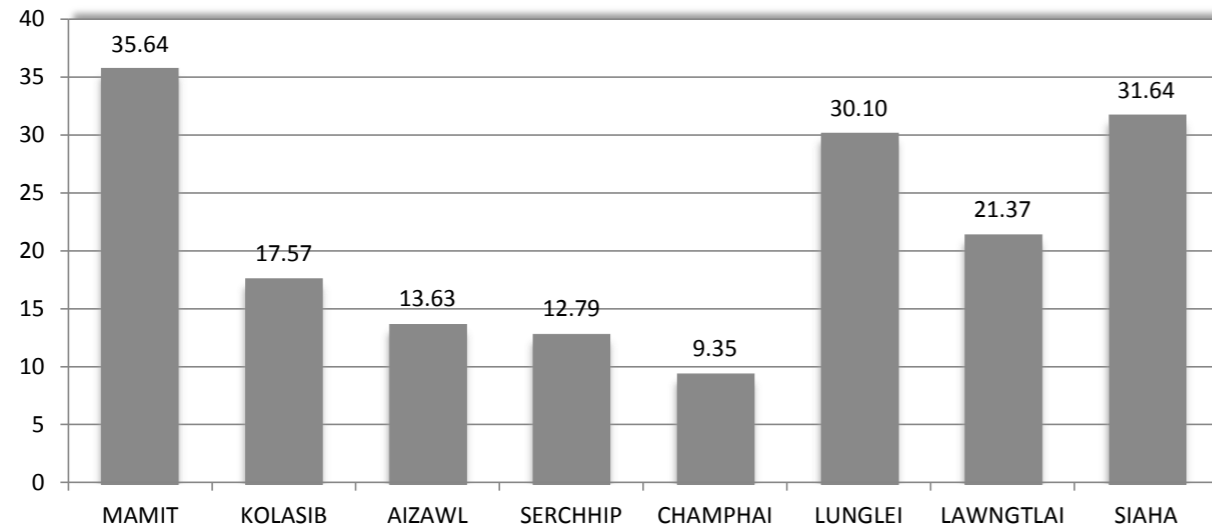


## DISTRICT-WISE ABSTRACT OF BPL HOUSEHOLD

Sl. No.	Name of District	Total Household	No. of BPL Household	Percentage to total Household
1	2	3	6	7
1	MAMIT	20163	7186	<b>35.64</b>
2	KOLASIB	19359	3401	<b>17.57</b>
3	AIZAWL	92779	12668	<b>13.63</b>
4	SERCHHIP	13841	1770	<b>12.79</b>
5	CHAMPHAI	29043	2715	<b>9.35</b>
6	LUNGLEI	37997	11437	<b>30.10</b>
7	LAWNGTLAI	61593	13162	<b>21.37</b>
8	SIAHA	13416	4245	<b>31.64</b>
	<b>MIZORAM</b>	<b>288191</b>	<b>56584</b>	<b>19.63</b>

District-wise Percentage of BPL Families



## BLOCK-WISE ABSTRACT OF BPL HOUSEHOLD

Sl. No.	Name of District	Name of Blocks in the District	No. of Village in the Block	No. of Household in the Block	No. of BPL Families in the Block	% of BPL Families to the Total Household in the Block
1	2	3		4	5	6
1	Mamit	Zawlnuam	47	11760	3734	31.75%
		W. Phaileng	20	5077	2393	47.13%
		Reiek	20	3326	1059	31.84%
		District Total		<b>87</b>	<b>20163</b>	<b>7186</b>
2	Kolasib	Bilkhawthlir	34	13284	2166	16.31%
		Thingdawl	18	6075	1235	20.33%
	District Total		<b>52</b>	<b>19359</b>	<b>3401</b>	<b>17.57%</b>
3	Aizawl	Tlangnuam (Urban)	12	67023	7940	11.84%
		Tlangnuam (Rural)	82	5055	727	16.79%
		Aibawk	20	3669	576	14.38%
		Phullen	12	4245	516	19.00%
		Thingsulthliah	22	7487	1495	19.96%
		Darlawn	30	6254	1414	22.60%
	District Total		<b>178</b>	<b>92779</b>	<b>12668</b>	<b>13.65%</b>
4	Serchhip	Serchhip	34	9824	1284	13.07%
		E. Lungdar	14	4017	486	12.10%
		District Total		<b>48</b>	<b>13841</b>	<b>1770</b>
5	Champhai	Champhai	33	11753	937	7.97%
		Khawzawl	29	7671	386	5.06%
		Khawbung	26	5357	658	12.28%
		Ngopa	14	4262	734	17.22%
	District Total		<b>102</b>	<b>29043</b>	<b>2715</b>	<b>9.35</b>
6	Lunglei	Bunghmun	33	4468	780	17.46%
		Lungsen	63	9466	4445	46.96%
		Lunglei	64	17985	5373	29.87%
		Hnahthial	24	6078	839	13.80%
			District Total		<b>184</b>	<b>37997</b>
7	Lawngtlai	Chawngte	79	43572	5734	13.16%
		Bungtlang 'S'	30	3970	2705	68.14%
		Lawngtlai	44	9996	3237	32.38%
		Sangau	20	4055	1486	36.65%
			District Total		<b>173</b>	<b>61593</b>
8	Siaha	Siaha	45	8371	1713	20.46%
		Tipa	47	5045	2532	50.19%
		District Total		<b>92</b>	<b>13416</b>	<b>4245</b>
	<b>TOTAL - MIZORAM</b>		<b>864</b>	<b>288191</b>	<b>56584</b>	<b>19.63%</b>