



METEOROLOGICAL DATA

OF

MIZORAM

2015

DIRECTORATE OF ECONOMICS & STATISTICS
PLANNING & PROGRAMME IMPLEMENTATION DEPARTMENT
GOVERNMENT OF MIZORAM, AIZAWL

METEOROLOGICAL DATA OF MIZORAM 2015

Publisher :

Directorate of Economics & Statistics
Planning & Programme Implementation Department
Government of Mizoram

Copyright © : Publisher

Copy : 150

Log on to : www.desmizo.mizoram.gov.in

Printer : Directorate of Economics & Statistics,
Mizoram, Aizawl – 796001.

PREFACE

The Meteorological Data of Mizoram for the Year 2015 is hereby brought out by the Directorate of Economics and Statistics, Mizoram. Rainfall records are based on daily rainfall report collected from 22 centres spreading throughout the State, while the data on temperature and humidity are of Aizawl City only.

Statistical calculation and analytical compilation of the reports from various centres have been done by Technical Wing of Directorate of Economics and Statistics. I am very glad to all District Research Officers, Economics & Statistics, various Block Development Officers, District Agriculture Officers, Agriculture Extension Officers, Sub Divisional Agriculture Officers and Chief Scientific Officer, Directorate of Science & Technology, Mizoram for their co-operation and timely report without which publication of this report would not be possible.

I do hope that the data contain in this report will be of immense help to all users and also serve as an important indicator. Suggestions for its improvement are always welcome for future publications.

Aizawl,
April 1, 2016

(VANLALREMA)
Director,
Economics & Statistics
Mizoram : Aizawl.

CONTENTS

	Page
1. Pre-view.....	2
2. Month-wise Average Rainfall in Mizoram.....	3
3. District-wise Average Monthly Rainfall.....	4
4. District-wise Monthly Average Rainfall of Mizoram.....	5-6
5. Reporting Centre-wise Annual Rainfall in Mizoram.....	7
6. Centre-wise Monthly Rainfall Record	8-12
7. Average Rainfall during different seasons in Mizoram.....	13
8. Temperature during different seasons in Aizawl City.....	13
9. Month-wise Relative Humidity in Aizawl City.....	14
10. Month-wise maximum-minimum average Temperature in Aizawl City.....	15
11. Chart showing Monthly Rainfall in Mizoram	16
12. Chart showing District-wise Annual Rainfall	17
13. Chart showing Minimum & Maximum Average Temperature of Aizawl City & Month-wise Relative Humidity of Aizawl City	18

PREVIEW

Mizoram comes under the direct influence of the South-West Monsoon, as such it generally receives an adequate amount of rainfall. The rainy season (summer monsoon) generally start from the month of April, it then rains heavily from May to September and lasted till late October. The winter season i.e. November to February is generally dry, this season receives very little rainfall.

During 2015, Mizoram received an annual rainfall of 2179.8mm. Heaviest rainfall of 481.9 mm was received during the month of July while the lowest rainfall of 1.5mm during the month of December. 62.88% of the total annual rainfall was received during the four months of May, June, July & August. The amount of rainfall was also more or less evenly spread throughout the State.

HIGHLIGHTS

1. Average Annual Rainfall in Mizoram during 2015 (January – December)
: 1476.6mm
2. Total No. of Rainfall Collecting Centre during 2015 : 22
3. District-wise No. of Collecting Centre :

1) Mamit	-	4
2) Kolasib	-	3
3) Aizawl	-	4
4) Champhai	-	4
5) Serchhip	-	1
6) Lunglei	-	3
7) Lawngtlai	-	2
8) Saiha	-	1
Total :	-	22
4. Month with heaviest rainfall in Mizoram during 2015.
Month : July Amount : 481.9mm
5. Month receiving lowest rainfall in Mizoram during 2015.
Month : December Amount : 1.5mm
6. District with heaviest rainfall during 2015.
District : Lunglei Amount : 254.1mm
7. District with lowest rainfall during 2015.
District : Lawngtlai Amount : 132.2mm
8. Name of Centre recording highest Annual rainfall during 2015.
Centre : Lunglei Amount : 9150.7mm
9. Name of Centre recording lowest Annual rainfall during 2015.
Centre : Kolasib Amount : 2019.8mm

MONTH-WISE AVERAGE RAINFALL IN MIZORAM

Sl No.	Month	Average Rainfall (in mm)				
		2011	2012	2013	2014	2015
1	2	3	4	5	6	7
1	January	13.7	11.5	-	-	10.2
2	February	2.1	17.6	1.46	21.8	6.3
3	March	83.4	19.2	4.7	23.9	31.5
4	April	105.3	302.3	65.60	22.7	281
5	May	422.3	209.7	499.3	304.3	146.3
6	June	439.0	456.7	293.1	381.7	298.2
7	July	372.2	264.0	351.9	307.8	481.9
8	August	547.9	401.8	519.9	297.9	444.2
9	September	374.2	355.0	476.0	325.6	296.2
10	October	165.8	195.0	209.2	130.9	175.4
11	November	0.4	54.8	1.3	4.4	7
12	December	0.1	0.0	-	0.2	1.5
	ANNUAL	210.5	190.6	201.9	151.7	2179.8

**DISTRICT-WISE AVERAGE RAINFALL (JAN-DEC)
2011-2015**

Sl. No.	District	Average Rainfall (in mm)				
		2011	2012	2013	2014	2015
1	2	3	4	5	6	7
1	Mamit	195.8	215.6	212.2	163.5	198.3
2	Kolasib	250.9	235.8	244.7	181.5	168.3
3	Aizawl	147.5	205.6	184.6	133.6	178.6
4	Champhai	147.5	159.0	156.4	128.7	155
5	Serchhip	162.5	146.0	136.6	150.9	180.4
6	Lunglei	225.1	219.7	192.7	197.2	254.1
7	Lawngtlai	187.8	102.3	144.2	112	132.2
8	Saiha	367.0	240.8	343.3	189.3	186

DISTRICT – WISE MONTHLY AVERAGE RAINFALL OF MIZORAM DURING 2011 - 2015 (in mm)

Sl No.	Name of District	Year	Jan	Feb	Mar	April	May	June	July	Aug	Sept	Oct	Nov	Dec
1	2		3	4	5	6	7	8	9	10	11	12	13	14
1	Mamit	2011	2.1	2.5	85.4	163.2	483.6	377.8	330.3	521.3	273.2	110.5	0.0	0.0
		2012	33.5	21.2	33.5	439.0	233.3	532.8	222.4	539.8	246.3	235.0	50.0	-
		2013	-	1.2	11.6	100.5	701.3	336.3	319.5	536.2	406.7	133.2	-	-
		2014	Nil	10.8	53.7	67.6	449.5	279.6	406.4	238.4	383.5	66.8	6.5	Nil
		2015	5.5	15.25	63.8	411	335.7	256.6	380.6	426.9	317.4	167.6	Nil	Nil
2	Kolasib	2011	3.0	0.0	39.1	114.1	561.2	517.3	639.0	630.4	305.1	201.7	0.0	0.0
		2012	25.3	24.4	9.9	461.3	231.3	447.6	306.0	548.1	516.2	229.0	31.0	-
		2013	-	2.5	8.0	98.7	939.1	339.6	532.7	509.6	392	115.5	-	-
		2014	Nil	14.3	40.9	75.9	314.8	314.3	571.2	269.6	457.4	118	2.1	Nil
		2015	5.8	14.8	32.4	271.2	261.1	319.4	367.6	357.9	213.4	152.8	16.3	7.13
3	Aizawl	2011	13.9	0.5	80.9	109.7	294.3	297.3	257.1	335.4	293.5	86.5	0.0	0.8
		2012	15.8	25.2	42.0	345.3	242.2	437.7	255.2	473.7	407.5	135.2	86.7	-
		2013	-	2.75	8.9	84.2	423.5	225	271.7	444.5	379.5	375.7	-	-
		2014	Nil	12.9	26.5	41.8	324.1	255.5	308.5	251.1	309.8	73.1	0.75	Nil
		2015	15	11.3	24.9	250.6	184.9	279.8	366.5	515.1	277.3	214.7	2.9	0.7
4	Champhai	2011	15.9	0.0	54.9	102.2	248.9	350.6	319.9	294.1	234.3	146.3	2.9	0.0
		2012	14.3	24.3	12.0	292.2	142.0	425.5	189.5	321.7	297.9	142.2	46.2	-
		2013	-	0.5	7.3	59.4	378.3	288.1	267.4	486.5	263.2	126.5	-	-
		2014	Nil	25.3	22.2	22.6	299.7	287	228.7	268.7	279.8	106.9	3.5	Nil
		2015	9.4	4.4	31.7	267.3	108.6	171.5	426.7	428.8	227	175.4	7.6	2.32

Sl No.	Name of District	Year	Jan	Feb	Mar	April	May	June	July	Aug	Sept	Oct	Nov	Dec
1	2		3	4	5	6	7	8	9	10	11	12	13	14
5	Serchhip	2011	14.0	14.0	64.4	58.3	320.2	466.5	211.4	392.5	299.1	109.7	0.0	0.0
		2012	-	9.0	1.8	233.7	114.6	487.9	299.2	246.8	151.0	109.1	99.1	-
		2013	-	-	-	35.55	424	244.5	245.2	321.2	189.6	179.5	-	-
		2014	Nil	6	15.4	2	269.3	466.3	280.1	321.5	348.3	92	10.1	Nil
		2015	0.5	4.3	22.2	399.8	105	253	538.2	373.7	320.1	138.5	7.95	1.5
6	Lunglei	2011	28.7	0.0	93.0	104.1	519.0	475.7	322.8	576.3	415.8	165.2	0.0	0.0
		2012	0.3	5.1	40.8	251.7	298.5	674.0	330.2	372.3	341.2	254.2	68.7	-
		2013	-	1.6	2.0	68.5	447.7	347.1	305.4	395.7	520.6	224	-	-
		2014	Nil	39.2	16.1	12.5	342.2	552.7	289.4	451.3	508.8	144.6	9.7	0.6
		2015	18	Nil	24.7	269.4	92.1	533.1	682.1	703.2	485.6	233.4	8.3	Nil
7	Lawngtlai	2011	13.0	0.0	101.0	81.0	413.0	333.0	293.0	523.0	328.0	169.0	0.0	0.0
		2012	0.0	23.5	0.0	121.0	56.5	78.0	97.0	294.1	281.3	235.4	41.5	-
		2013	-	-	-	28.2	285.7	186.2	250.7	388	436.5	156	-	-
		2014	Nil	2.5	13	1.25	158.5	320.3	170.3	218.5	271.8	184.3	3	1.5
		2015	4.5	Nil	31.5	198.1	49.7	264.1	465.1	292.2	171.3	108.5	1	0.6
8	Saiha	2011	19.0	0.0	148.2	109.8	538.0	693.2	604.2	1110.2	844.3	336.8	0.0	0.0
		2012	0.0	8.2	13.6	274.9	359.0	570.0	412.4	418.0	598.2	219.9	15.2	-
		2013	-	3.1	-	49.8	395.4	377.7	622.8	1077.8	1220.2	363	10.2	-
		2014	Nil	64	40	28	276.5	578.4	208.1	364.5	450.7	262.1	Nil	Nil
		2015	23.3	Nil	20.7	181	33	308	628	455.6	357.8	212.5	12.3	Nil

**REPORTING CENTRE-WISE ANNUAL RAINFALL
IN MIZORAM**

Sl No.	Name of Reporting Centre	Name of District	Amount of Rainfall (in mm)				
			2011	2012	2013	2014	2015
1	2	3	5	6	7	8	9
1	Reiek	Mamit	2911.0	3399	2909.5	2181	2659.5
2	Mamit	Mamit	1987.6	2201.6	2333.5	1805.6	1955.9
3	Zawlnuam	Mamit	2196.0	2018	2622	1849.9	2285.7
4	W.Phaileng	Mamit	2305.0	2729	2322	2016	2621.5
	Average		2349.9	2586.9	2546.6	1962.8	2380.3
5	Bilkhawthlir	Kolasib	4253.0	3314.6	2960.1	1567.2	1210.6
6	Kolasib	Kolasib	2315.6	2585.8	2998.8	2627.7	2536.7
7	Bukpui	Kolasib	2464.0	2590	2854.1	2340.1	2313.6
	Average		3010.9	2830.1	2937.8	2178.5	2019.8
8	Aibawk	Aizawl	852.2	2376.2	1899	1386.4	1478.4
9	Darlawn	Aizawl	2171.2	2716.7	2607	1751	2423
10	Thingsulthliah	Aizawl	1668.0	2236	1284	1631.8	2326.5
11	Aizawl	Aizawl	2386.7	2538.2	2073.7	1648.5	2347.5
	Average		1769.5	2466.8	2215.7	1604	2143.7
12	Khawzawl	Champhai	1544.9	1822.1	1863.2	1695.1	1585.6
13	Champhai	Champhai	2018.5	1799.9	1934.2	1480.5	1985.7
14	Vaphai	Champhai	1353.5	1671.6	1837.2	1250.2	1787.6
15	Ngopa	Champhai	2162.2	2337.2	1875.6	1753	2086
	Average		1769.8	1907.7	1877.2	1544.4	2146
16	Serchhip	Serchhip	1940.3	1784.8	1725.9	1811	2214.7
	Average		1949.9	1752.5	1639.5	1811	2214.7
17	Lunglei	Lunglei	3476.4	3286.5	2949.5	3110.2	3808.7
18	Hnahthial	Lunglei	1924.3	2105.1	2046.3	1720.3	1942
19	Lungsen	Lunglei	N.A.	2519	1943.	2272	3403
	Average		2700.4	2636.9	2312.6	2367.1	3051.2
20	Lawngtlai	Lawngtlai	N.A.	887.7	1768.9	1541.3	1673.4
21	Sangau	Lawngtlai	2254.0	1569	1694	1149	1500
	Average		2254.0	1228.4	1731.3	1344.9	3173.4
22	Saiha	Saiha	4403.7	2889.4	4120	2272.3	2232.2
	Average		4403.7	2889.4	4120	2272.3	2232.2

CENTRE-WISE MONTHLY RAINFALL RECORD (JANUARY – DECEMBER) 2015

Sl No	Name of District Centre	Year	Jan	Feb	Mar	April	May	June	July	Aug	Sept	Oct	Nov	Dec	Total
1	2	3	4	5	6	7	8	9	10	11	12	13	14	15	16
1	MAMIT DISTRICT														
	a) Reiek	2011	0.0	0.0	69.0	228.0	594.0	473.0	434.0	575.0	399.0	139.0	0.0	0.0	2911.0
		2012	30.0	30.0	77.0	655.0	310.0	753.0	358.0	796.0	190.0	200.0	-	-	3399.0
		2013	0.0	0.0	1.5	117	776	442	435	568	405	165	-	-	2909.5
		2014	Nil	15	57	90	431	358	389	330	431	72	8	Nil	2181
		2015	4	14	25.5	480	232	303.5	464	579	341.5	216	Nil	Nil	2659.5
	b) Zawlnuam	2011	0.0	10.0	97.0	155.0	537.0	378.0	221.0	489.0	179.0	130.0	0.0	0.0	2196.0
		2012	23.0	15.0	8.0	397.0	255.0	350.0	121.0	413.0	292.0	144.0	-	-	2018.0
		2013	0.0	0.0	17	120	770	362	326	596	341	90	-	-	2622
		2014	Nil	Nil	40	35	337.4	237	710.5	174	264	52	Nil	Nil	18499
		2015	Nil	22	45	412	539	251	338.4	262.9	312	103.4	Nil	Nil	2285.7
	c) Mamit	2011	2.0	0.0	67.2	171.4	354.0	304.5	271.3	430.3	287.9	99.0	0.0	0.0	1987.6
		2012	70.2	26.0	25.0	379.0	194.4	528.1	102.6	430.2	249.1	151.2	45.8	-	2201.6
		2013	0.0	0.0	7	93	640.2	231.2	325	466	435.1	136	-	-	2333.5
		2014	Nil	14.5	16	72.5	521.6	227.4	254.3	191.9	422.2	85.2	Nil	Nil	1805.6
		2015	18	25	13	420.1	299.8	199.9	198.2	340.9	292.7	148.3	Nil	Nil	1955.9
	d) W.Phaileng	2014	Nil	14	102	73	508	296	272	258	417	58	18	-	2016
		2015	Nil	Nil	172	332	272	272	522	525	323.5	203	Nil	Nil	26215
2	KOLASIB DISTRICT														
	a) Bilkhawthlir	2011	0.0	0.0	78.0	83.0	682.0	728.0	1139.0	792.0	379.0	372.0	0.0	0.0	4253.0
		2012	50.0	18.0	0.0	867.0	368.5	557.5	292.0	480.4	358.0	315.0	8.2	-	3314.6
		2013	-	-	7	107	1084.9	330.6	699	320	292.3	119.3	-	-	2960.1
		2014	Nil	6.6	22.1	55.6	226.3	235	423.7	196.7	289.6	108.5	3.1	Nil	1567.2
		2015	Nil	Nil	1.10	57.8	Damage	277.8	287	286.5	186.6	92.2	12	9.6	1210.6

Contd...

CENTRE-WISE MONTHLY RAINFALL RECORD (JANUARY – DECEMBER) 2015

SI No	Name of District Centre	Year	Jan	Feb	Mar	April	May	June	July	Aug	Sept	Oct	Nov	Dec	Total
1	2	3	4	5	6	7	8	9	10	11	12	13	14	15	16
	b) Kolasib	2011	0.0	0.0	8.2	138.4	474.6	388.8	433.1	579.2	161.2	132.1	0.0	0.0	2315.6
		2012	25.8	55.2	29.6	517.0	153.4	438.4	289.0	413	515.6	125.0	23.8	-	2585.8
		2013	-	7.5	12	79	883.8	320.2	432.9	665.6	499.6	98.2	-	-	2998.8
		2014	Nil	19.2	44	90.4	435.9	387	763.2	358	475.4	52.2	2.4	Nil	2627.7
		2015	10.6	19.2	84.8	402.6	391.6	367	477.2	368.6	243.2	137.2	22.9	11.8	2536.7
	c) Bukpui	2013	-	-	5.0	110	848.6	368	466.4	543.1	384	129	-	-	2854.1
		2014	Nil	17	56.5	81.6	282.1	320.8	526.6	254	607.2	193.3	1	Nil	2340.1
		2015	7	25.2	11.5	353.2	391.7	313.6	338.8	418.7	210.5	229.2	14.2	Nil	2313.6
3	AIZAWL DISTRICT														
	a) Aibawk	2011	6.1	0.0	91.2	92.4	144.5	167.4	117.6	178.1	54.9	0.0	0.0	0.0	852.2
		2012	20.0	13.0	80.1	232.1	253.0	471.0	235.0	595.0	330.0	123.0	24.0	-	2376.2
		2013	-	-	-	24	296	129	-	624	601	225	-	-	1899
		2014	Nil	Nil	7.2	9.1	302.3	297	254.5	247.4	238.7	30.2	Nil	Nil	1386.4
		2015	Nil	6.2	21.6	96	119.1	145.2	303.6	344.1	217.2	222.8	2.6	Nil	1478.4
	b) Darlawn	2011	35.4	2.0	75.2	166.4	393.5	377.7	456.0	305.0	291.0	69.0	0.0	0.0	2171.2
		2012	24.0	16.0	9.0	526.0	224.0	348.0	380.0	411.0	540.0	141.0	97.7	-	2716.7
		2013	-	8	22	128	718	323	463	505	362	78	-	-	2607
		2014	Nil	16	60	76	321	232	367	245	311	123	Nil	Nil	1751
		2015	47	24	17	383	270	297	342	587	257	196	3	Nil	2423
	c) Thingsulthliah	2011	3.0	0.0	80.0	91.0	229.0	261.0	152.0	357.0	308.0	184.0	0.0	3.0	1668.0
		2012	NA	30.0	17.0	323.0	282.0	358.0	197.0	503.0	361.0	83.0	82.0	-	2236.0
		2013	-	-	4	75	190	234	308	206	168	99	-	-	1284
		2014	Nil	16	20	41	270	216.8	256	250	465	94	3	-	1631.8
		2015	4	7	31.5	200	150	329	404	687	283	228	3	Nil	2326.5

Contd...

CENTRE-WISE MONTHLY RAINFALL RECORD (JANUARY – DECEMBER) 2015

Sl No	Name of District Centre	Year	Jan	Feb	Mar	April	May	June	July	Aug	Sept	Oct	Nov	Dec	Total
1	2	3	4	5	6	7	8	9	10	11	12	13	14	15	16
	d) Aizawl	2011	11.0	0.0	77.0	89.0	410.0	383.1	302.6	501.3	519.9	92.8	0.0	0.0	2386.7
		2012	19.2	42.0	62.0	300.3	209.7	574.0	209.0	386.0	399.0	194.0	143.0	-	2538.2
		2013	-	3	9.7	110	490	214	316	443	387	101	-	-	2073.7
		2014	Nil	19.7	19	41.1	403.1	276.5	356.8	262.1	224.8	45.4	Nil	Nil	1648.5
		2015	9	8	29.5	323.5	200.5	348	416.5	442.5	352	212	3	3	2347.5
4	CHAMPHAI DISTRICT														
	a) Khawzawl	2011	26.4	0.0	61.0	59.6	224.4	370.2	217.6	321.9	189.2	74.6	0.0	0.0	1544.9
		2012	1.5	1.0	0.5	366.0	82.0	439.0	345.0	202.1	202.1	156.4	26.5	-	1822.1
		2013	-	-	4	52.6	377.3	357	232	566	274.3	-	-	-	1863.2
		2014	Nil	25.4	15.3	30.5	357	253.5	265	298.4	339.8	107.9	2.3	Nil	1695.1
		2015	5.4	8	28.2	178.9	88.4	134.7	363.4	383.4	218.3	171.3	2.5	3.1	1585.6
	b) Champhai	2011	37.0	0.0	53.0	122.0	266.0	436.9	342.8	267.5	217.0	276.3	0.0	0.0	2018.5
		2012	11.1	46.0	8.4	326.6	83.6	420.1	177.3	343.5	164.2	160.2	58.9	-	1799.9
		2013	-	2.1	6	58.1	461.9	252.8	267.7	438	274.6	173	-	-	1934.2
		2014	Nil	37.4	26.1	27.8	373.9	357.4	165.8	233.6	151.6	97.3	9.6	Nil	1480.5
		2015	8.1	6.2	33.2	248.8	85.9	216.2	410.7	545.2	256.8	158.3	10.1	6.2	1985.7
	c) Vaphai	2011	0.0	0.0	13.0	84.0	175.0	253.0	295.5	173.0	220.0	140.0	0.0	0.0	1353.5
		2012	44.5	35.0	39.0	199.0	209.0	334.0	105.1	337.0	204.0	124.6	40.4	-	1671.6
		2013	-	-	3.3	25.6	314.9	376.4	302	377	276	162	-	-	1837.2
		2014	Nil	24.2	20.2	24.8	169.8	325.6	144.4	250.3	201.8	89.1	Nil	Nil	1250.2
		2015	15.8	Nil	35.4	277	70.9	155.4	489.3	318.9	226.9	186.1	11.9	Nil	1787.6

Contd...

CENTRE-WISE MONTHLY RAINFALL RECORD (JANUARY – DECEMBER) 2015

Sl No	Name of District Centre	Year	Jan	Feb	Mar	April	May	June	July	Aug	Sept	Oct	Nov	Dec	Total
1	2	3	4	5	6	7	8	9	10	11	12	13	14	15	16
	d) Ngopa	2011	0.0	0.0	92.4	143.1	330.5	342.2	423.6	414.0	310.9	94.1	11.4	0.0	2162.2
		2012	0.0	15.2	0.0	277.1	193.5	508.8	130.7	404.1	621.3	127.5	59.0	-	2337.2
		2013	-	-	16.2	101.6	359.1	166.4	268.1	565	228.2	171	-	-	1875.6
		2014	Nil	14.2	27.3	7.4	298.1	211.5	339.7	292.8	426.1	133.6	2.3	Nil	1753
		2015	8.4	3.4	30.3	364.8	189.3	179.9	443.5	468	206.2	186.1	6.1	Nil	2086
5	SERCHHIP DISTRICT														
	a) Serchhip	2011	0.0	0.0	71.8	83.6	340.0	493.0	187.0	385.8	337.7	41.4	0.0	0.0	1940.3
		2012	0.0	8.0	3.6	117.4	114.0	655.9	384.1	301.6	-	52.2	148.0	-	1784.8
		2013	-	-	-	18.1	374	290	149	285	379.3	58.1	-	-	1553.5
		2014	Nil	6	15.4	2	269.3	466.3	280.1	321.5	348.3	92	10.1	Nil	1811
		2015	0.5	0.3	22.4	444.5	61.7	169	591.1	413.3	378.3	126	7.6	Nil	2214.7
6	LUNGLEI DISTRICT														
	a) Lunglei	2011	44.0	0.0	144.9	127.2	725.6	573.2	437.2	751.2	485.0	188.1	0.0	0.0	3476.4
		2012	1.0	10.3	39.3	299.2	318.4	842.2	516.3	593.2	291.3	295.3	81.0	-	3287.5
		2013	-	3	-	75.3	515.4	495.4	428.2	484	598	350.2	-	-	2949.5
		2014	Nil	44.8	13.3	15.5	467.4	680.2	427	572	696	177	15	2	3110.2
		2015	41	Nil	55.1	181.2	87	633	837	884	739.4	336	12	Nil	3808.7
	b) Hnahthial	2011	13.4	0.0	41.1	81.0	312.3	378.1	208.3	401.3	346.5	142.3	0.0	0.0	1924.3
		2012	0.0	0.0	42.0	223.8	347.1	550.9	109.4	254.3	317.2	200.4	60.0	-	2105.1
		2013	-	-	6	75.3	453.8	281.1	233	369.1	445	183	-	-	2046.3
		2014	Nil	45	25.1	22	277.3	256	246.4	247.1	452.4	134.9	14.1	Nil	1720.3
		2015	13	Nil	19.2	259.1	18.3	251.4	392.4	377.8	403.4	194.4	13	Nil	1942

Contd...

CENTRE-WISE MONTHLY RAINFALL RECORD (JANUARY – DECEMBER) 2015

Sl No	Name of District Centre	Year	Jan	Feb	Mar	April	May	June	July	Aug	Sept	Oct	Nov	Dec	Total
1	2	3	4	5	6	7	8	9	10	11	12	13	14	15	16
	c) Lungsen	2011	N.A	N.A	N.A	N.A	N.A	N.A	N.A	N.A	N.A	N.A	N.A	N.A	N.A
		2012	0.0	5.0	41.0	232.0	230.0	629.0	365.0	269.0	416.0	267.0	65.0	-	2519.0
		2013	-	2	-	55	374	265	255	334	519	139	-	-	1943
		2014	Nil	28	10	Nil	282	722	195	535	378	122	Nil	Nil	2272
		2015	Nil	Nil	Nil	368	171	715	817	848	314	170	Nil	Nil	3403
7	LAWNGTLAI DISTRICT														
	a) Lawngtlai	2011	N.A	N.A	N.A	N.A	N.A	N.A	N.A	N.A	N.A	N.A	N.A	N.A	N.A
		2012	NA	NA	NA	NA	NA	vNA	NA	364.2	278.7	244.8	NA	NA	887.7
		2013	-	-	-	50.5	330.5	105.5	254.4	428	399	201	-	-	1768.9
		2014	Nil	Nil	26	2.5	218	388.6	167.7	226.1	320.7	185.7	6	-	1541.3
		2015	9	Nil	29	109.2	45.5	291.2	460.2	360.4	238.6	127	2.1	1.2	1673.4
	b) Sangau	2011	13.0	0.0	101.0	81.0	413.0	333.0	293.0	523.0	328.0	169.0	0.0	0.0	2254.0
		2012	0.0	47.0	0.0	242.0	113.0	156.0	194.0	224.0	284.0	226.0	83.0	-	1569.0
		2013	-	-	-	6	241	267	247	348	474	111	-	-	1694
		2014	Nil	5.0	Nil	Nil	99	252	173	211	223	183	Nil	3.0	1149
		2015	Nil	Nil	34	287	54	237	470	224	104	90	Nil	Nil	1500
8	SAIHA DISTRICT														
	a) Saiha	2011	19.0	0.0	148.2	109.8	538.0	693.2	604.2	1110.2	844.3	336.8	0.0	0.0	4403.7
		2012	0.0	8.2	13.6	274.9	359.0	570.0	412.4	418.0	598.2	219.9	15.2	-	2889.4
		2013	-	3.1	-	49.8	395.4	377.7	622.8	1077.8	1220.2	363	10.2	-	4120
		2014	Nil	64	40	28	276.5	578.4	208.1	364.5	450.7	262.1	Nil	Nil	2272.3
		2015	23.3	Nil	20.7	181	33	308	628	455.6	357.8	212.5	12.3	Nil	2232.2

Contd...

AVERAGE RAINFALL DURING DIFFERENT SEASONS IN MIZORAM

Sl No.	Seasons	Rainfall (in mm)					Percentage to total annual rainfall				
		2011	2012	2013	2014	2015	2011	2012	2013	2014	2015
1	2	3	4	5	6	7	8	9	10	11	12
1	Winter (Nov-Jan)	14.2	66.3	1.3	4.6	74.7	0.6	2.9	0.05	0.25	4.9
2	Spring (Feb-April)	190.8	339.2	72.0	68.4	212.3	7.6	14.9	2.97	3.75	14
3	Summer (May-Aug)	1781.4	1332.2	1664.1	1291.7	913.5	70.6	58.2	68.7	70.92	60.3
4	Autumn (Sept-Oct)	540.0	550.0	685.2	456.5	314.3	21.3	24.0	28.28	25.06	20.8

TEMPERATURE DURING DIFFERENT SEASONS IN AIZAWL CITY (IN DEGREE CELCIUS)

Sl No.	Seasons	Minimum					Maximum				
		2011	2012	2013	2014	2015	2011	2012	2013	2014	2015
1	2	3	4	5	6	7	8	9	10	11	12
1	Winter (Nov-Jan)	13.5	13.3	12.44	11.42	6.7	25.0	23.8	18.6	25.79	28.14
2	Spring (Feb-April)	16.0	16.7	16.39	13.21	7.06	27.5	27.4	24.51	29.20	32.2
3	Summer (May-Aug)	19.9	19.9	19.13	16.69	12.62	27.3	27.6	28.61	27.98	31.82
4	Autumn (Sept-Oct)	19.6	19.1	18.89	15.85	13.25	27.8	26.3	28.25	27.43	31.55

MONTH-WISE RELATIVE HUMIDITY IN AIZAWL CITY

SI No.	Month	Relative Humidity in %									
		Maximum					Minimum				
		2011	2012	2013	2014	2015	2011	2012	2013	2014	2015
1	2	3	4	5	6	7	8	9	10	11	12
1	January	79	81.99	80.99	73.59	97.1	38	33.11	34.95	28.8	21.2
2	February	73	63.08	66.56	69.58	87.5	33	27.78	27.82	33.78	10
3	March	72	71.44	60.63	68.69	93	36	33.00	24.74	26.48	11.1
4	April	82	87.94	N.A	68.36	95	41	51.16	N.A	27.92	49.6
5	May	95	89.37	86.33	89.65	94.4	60	55.71	56.50	50.33	37.1
6	June	95	95.99	N.A	90.79	94.2	68	70.92	N.A	58.68	44.9
7	July	96	95.77	92.42	91.94	100	75	68.90	61.21	57.75	62
8	August	96	97.87	89.06	92.40	99	69	68.28	63.88	63.06	76
9	September	97	97.75	92.48	92.27	98	69	67.81	63.48	60.07	83
10	October	96	97.44	90.42	90.35	98	60	61.50	58.67	53.93	79
11	November	93	95.69	82.71	89.43	98	43	59.81	33.28	52.47	73
12	December	80	82.32	80.83	85.39	98	38	33.93	33.71	48.69	74
	Average	88	88.05	82.24	83.53	96.02	53	52.65	45.82	46.82	51.74

**MONTH-WISE MINIMUM AND MAXIMUM AVERAGE TEMPERATURE IN
AIZAWL CITY (IN DEGREE CELCIUS)**

Month	Minimum					Maximum				
	2011	2012	2013	2014	2015	2011	2012	2013	2014	2015
1	2	3	4	5	6	7	8	9	10	11
January	10.9	12.8	10.55	11.19	5.1	22.8	23.24	22.83	24.95	27.4
February	13.6	14.15	14.60	10.26	5	25.5	26.13	27.70	26.05	30.3
March	16.2	16.96	17.37	13.10	8.1	28.3	28.71	30.04	29.41	32.2
April	18.1	17.11	17.22	16.28	8.1	28.6	27.35	29.46	32.14	34.1
May	18.3	19.57	17.36	15.45	11	27.2	28.38	26.40	28.83	31.8
June	20.4	19.89	20.12	17.28	12.8	27.3	26.53	27.89	27.47	30.7
July	20.4	20.00	19.63	17.41	12	27.1	27.35	27.47	28.88	32.7
August	20.4	19.98	19.43	16.62	14.7	27.4	27.80	26.14	26.77	31.1
September	20.2	19.93	19.19	16.12	13.7	27.8	27.38	26.73	27.22	32.5
October	19.3	18.45	18.60	15.59	12.8	27.7	25.34	25.46	27.65	30.6
November	16.2	15.16	15.07	13.03	10	27.5	23.35	28.32	26.97	26.2
December	13.5	11.90	11.71	10.06	5.1	24.6	24.20	23.44	25.46	30.84

HOTTEST DAY

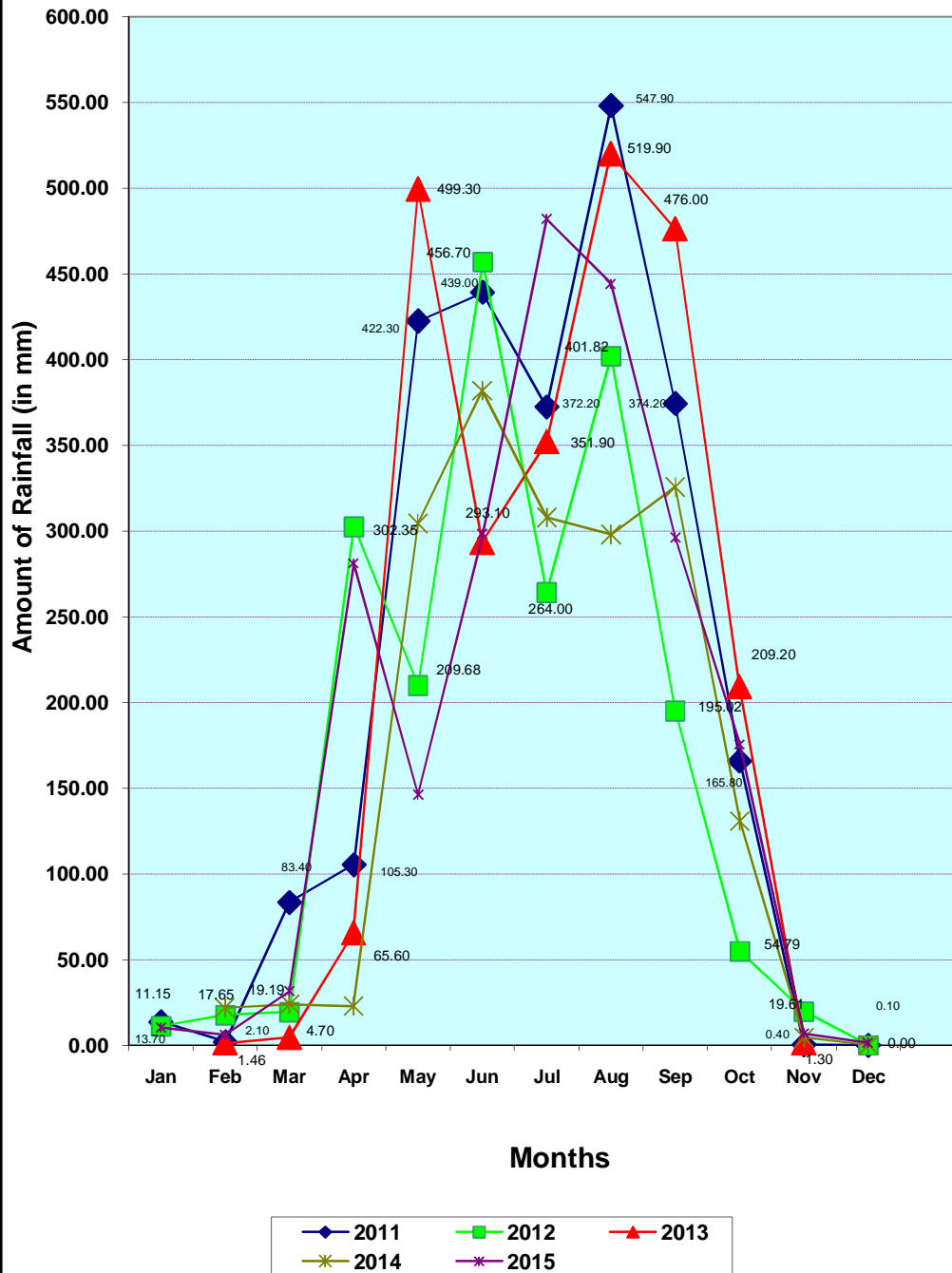
(29th July, 2015)

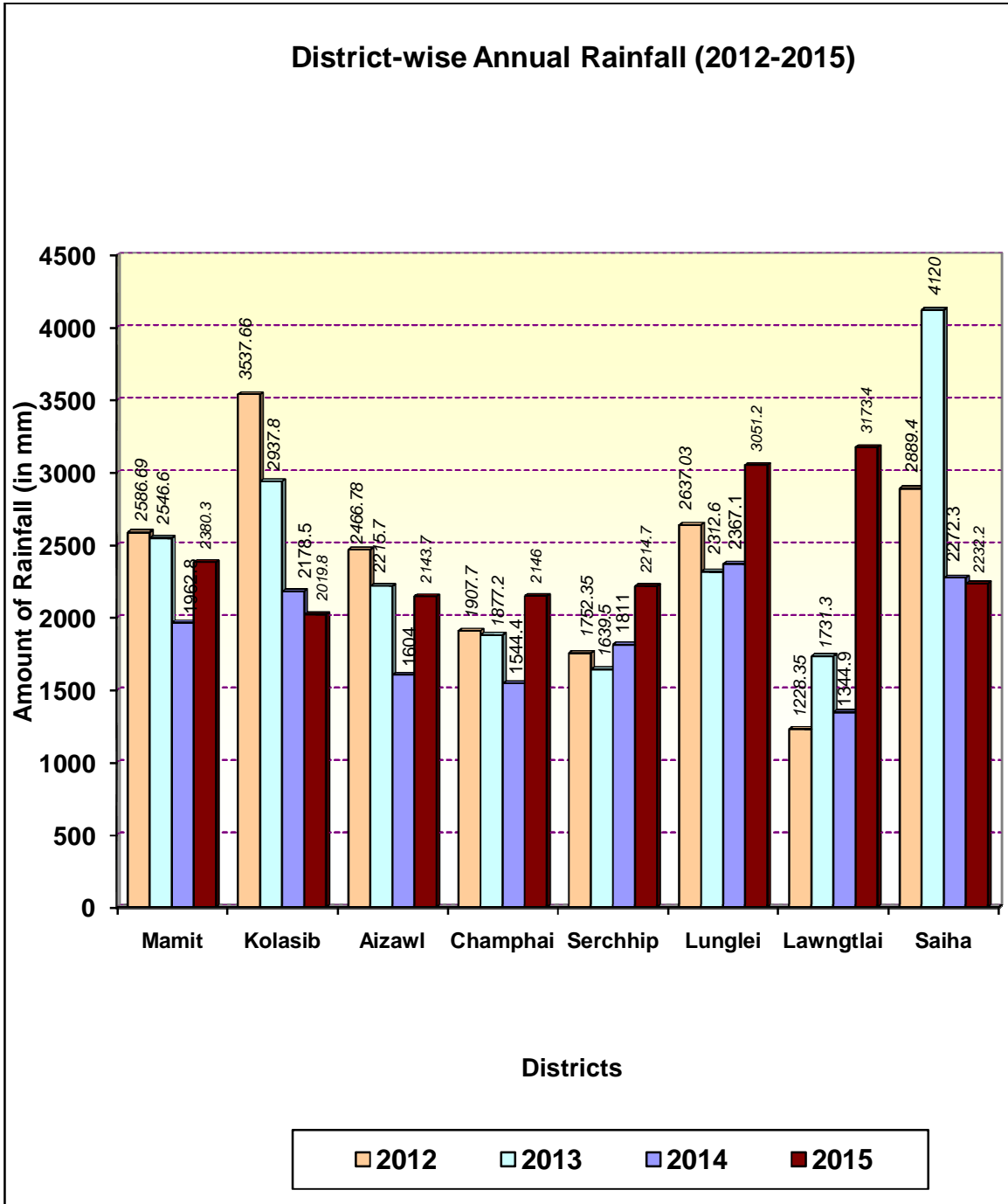
COLDEST DAY

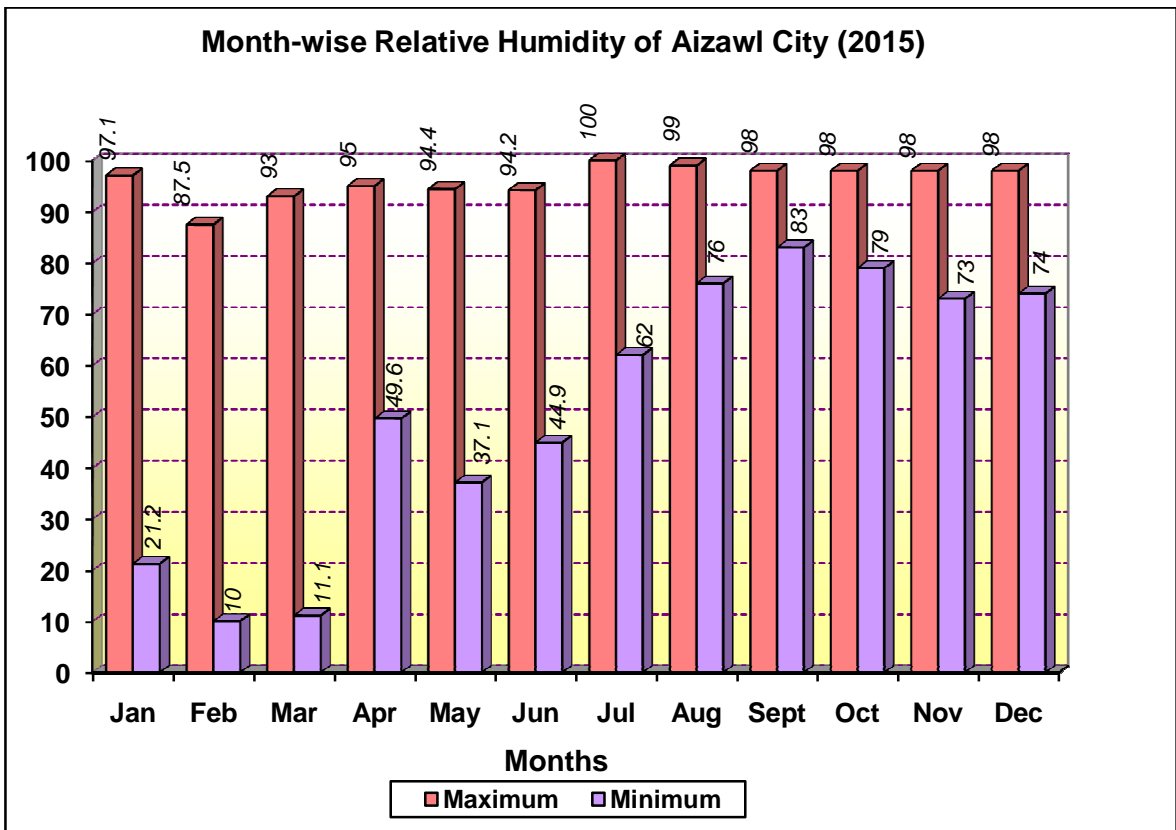
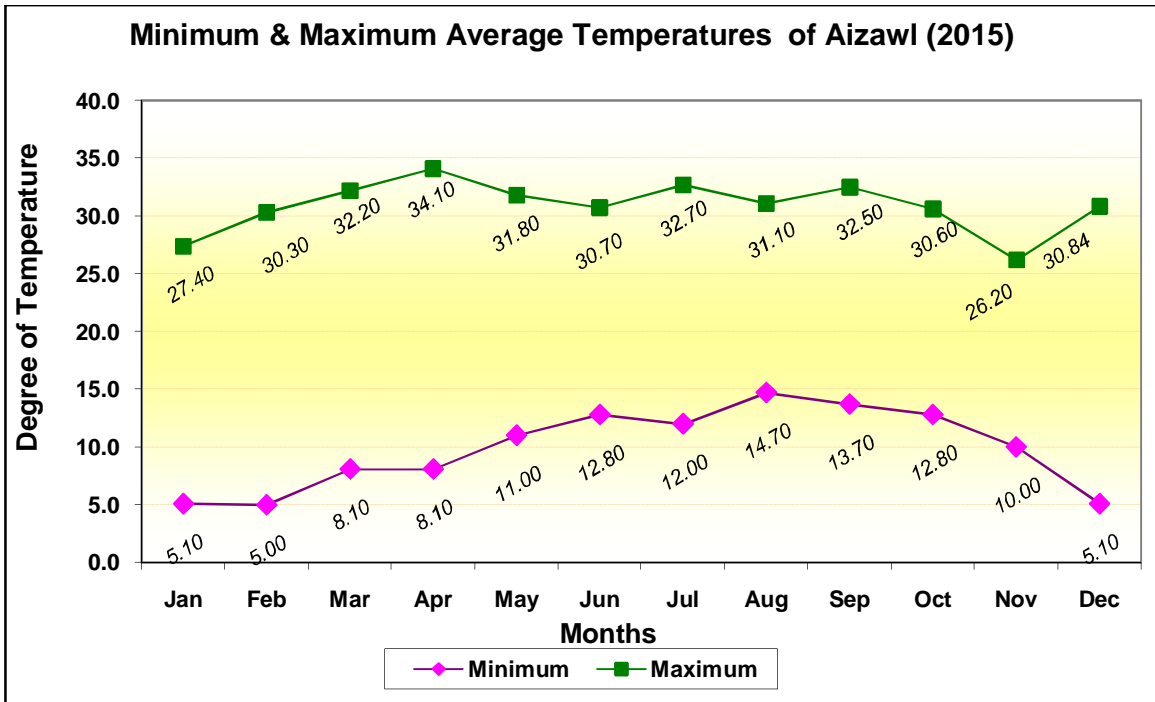
(20th January, 2015 and 22nd December, 2015 of which the temperature were 5.1 degree celcius in both days)

CHART

Monthly Rainfall in Mizoram (2011-2014)









**METEOROLOGICAL
DATA OF MIZORAM
2015**



**DIRECTORATE OF ECONOMICS & STATISTICS
PLANING & PTOGRAMME IMPLEMENTATION DEPARTMENT
GOVERNMENT OF MIZORAM, AIZAWL**
