

PREFACE

The Meteorological Data of Mizoram for the Year 2013 has been brought out by the Directorate of Economics and Statistics, Mizoram. Rainfall records are based on daily rainfall report collected from 23 centres spreading throughout the State, however the data on temperature and humidity are of Aizawl City only.

Statistical calculation and analytical compilation of the reports from various centres have been done by Technical Wing of Directorate of Economics and Statistics. My special thanks goes to all District Research Officers, Economics & Statistics, various Block Development Officers, District Agriculture Officers, Agriculture Extension Officers, Sub Divisional Agriculture Officers and Chief Scientific Officer of Science & Technology, Mizoram for their co-operation and timely report without which publication of this report would not have been possible.

I do hope that the Data contain in this report will be of immense help to all users and also serve as an important indicator. Suggestions for its improvement are always welcome.

*Dated : Aizawl
9th April, 2014*


(SAIHLIRA)
Director,
Economics & Statistics
Mizoram : Aizawl.

Contents

	Page No.
1. Pre-view.....	1
2. Month-wise Average Rainfall in Mizoram.....	2
3. District-wise Average Monthly Rainfall.....	3
4. District-wise Monthly Average Rainfall of Mizoram....	4
5. Reporting Centre-wise Annual Rainfall in Mizoram.....	6
6. Centre-wise Monthly Rainfall record	7
7. Average Rainfall during different seasons in Mizoram.....	12
8. Temperature during different seasons in Aizawl City.....	12
9. Month-wise Relative Humidity in Aizawl City.....	13
10. Month-wise maximum-minimum average Temperature in Aizawl City.....	14
11. Chart showing Monthly Rainfall in Mizoram	15
12. Chart showing District-wise Annual Rainfall	16
13. Chart showing Minimum & Maximum Average Temperatures of Aizawl City & Month-wise Relative Humidity of Aizawl City	17

PRE – VIEW

Mizoram comes under the direct influence of the South-West Monsoon, as such it generally receives an adequate amount of rainfall. The rainy season (summer monsoon) generally start from the month of April, it then rains heavily from May to September and lasted till late October. The winter season i.e. November to February is generally dry, this season receives very little rainfall.

During 2013, Mizoram received an annual rainfall of 2422.6 mm. Heaviest rainfall of 519.9 mm was received during the month of August while there was no rainfall during the month of January 68.7% of the total annual rainfall was received during the four months of May, June, July & August. The amount of rainfall was also more or less evenly spread throughout the State.

HIGHLIGHTS

1. Average Annual Rainfall in Mizoram during 2013 (January – December)
: 2422.6 mm.
2. Total No. of Rainfall Collecting Centre during 2013 : 23
3. District-wise No. of Collecting Centre :

1) Mamit	-	4
2) Kolasib	-	3
3) Aizawl	-	4
4) Champhai	-	4
5) Serchhip	-	2
6) Lunglei	-	3
7) Lawngtlai	-	2
8) Saiha	-	1
Total :	-	23
4. Month with heaviest rainfall in Mizoram during 2013.
Month : August
Amount : 519.9 mm
5. Month receiving lowest rainfall in Mizoram during 2013.
Month : January
Amount : 0 mm
6. District with heaviest rainfall during 2013.
District : Saiha
Amount : 343.3 mm
7. District with lowest rainfall during 2013.
District : Serchhip Amount : 136.6 mm
8. Name of Centre recording highest Annual rainfall during 2013.
Centre : Saiha
Amount : 4120 mm
9. Name of Centre recording lowest Annual rainfall during 2013.
Centre : Thingsulthliah
Amount : 1284 mm

MONTH-WISE AVERAGE RAINFALL IN MIZORAM

<i>Sl No.</i>	<i>MONTH</i>	<i>Average Rainfall (in mm)</i>				
		<i>2009</i>	<i>2010</i>	<i>2011</i>	<i>2012</i>	<i>2013</i>
1	2	3	4	5	6	7
1	January	0.3	0.0	13.7	11.5	-
2	February	2.4	3.2	2.1	17.6	1.46
3	March	22.6	119.4	83.4	19.2	4.7
4	April	141.4	199.5	105.3	302.3	65.60
5	May	160.6	369.5	422.3	209.7	499.3
6	June	331.1	464.2	439.0	456.7	293.1
7	July	318.1	428.0	372.2	264.0	351.9
8	August	468.2	524.7	547.9	401.8	519.9
9	September	360.4	503.6	374.2	355.0	476.0
10	October	164.8	275.6	165.8	195.0	209.2
11	November	41.8	27.9	0.4	54.8	1.3
12	December	0.0	59.3	0.1	0.0	-
	ANNUAL	167.8	247.9	210.5	190.6	201.9

**DISTRICT-WISE AVERAGE RAINFALL (JAN-DEC)
2009-2013**

Sl. No.	DISTRICT	Average Rainfall (in mm)				
		2009	2010	2011	2012	2013
1	2	4	5	6	7	
1	Mamit	221.9	228.5	195.8	215.6	212.2
2	Kolasib	142.6	291.5	250.9	235.8	244.7
3	Aizawl	139.8	204.3	147.5	205.6	184.6
4	Champhai	130.6	206.6	147.5	159.0	156.4
5	Serchhip	123.9	196.7	162.5	146.0	136.6
6	Lunglei	192.9	251.1	225.1	219.7	192.7
7	Lawngtlai	174.9	210.9	187.8	102.3	144.2
8	Saiha	270.4	393.6	367.0	240.8	343.3

DISTRICT – WISE MONTHLY AVERAGE RAINFALL OF MIZORAM DURING 2009 - 2013 (in mm)

<i>Sl No.</i>	<i>Name of District</i>	<i>Year</i>	<i>Jan</i>	<i>Feb</i>	<i>Mar</i>	<i>April</i>	<i>May</i>	<i>June</i>	<i>July</i>	<i>Aug</i>	<i>Sept</i>	<i>Oct</i>	<i>Nov</i>	<i>Dec</i>
1	2		3	4	5	6	7	8	9	10	11	12	13	14
1	Mamit	2009	2.3	0.1	48.5	297.6	206.5	379.6	289.4	577.5	549.3	252.9	58.0	0.0
		2010	0.0	18.4	182.4	257.8	455.4	439.7	299.8	442.7	370.0	201.7	25.8	48.2
		2011	2.1	2.5	85.4	163.2	483.6	377.8	330.3	521.3	273.2	110.5	0.0	0.0
		2012	33.5	21.2	33.5	439.0	233.3	532.8	222.4	539.8	246.3	235.0	50.0	-
		2013	-	1.2	11.6	100.5	701.3	336.3	319.5	536.2	406.7	133.2	-	-
2	Kolasib	2009	0.0	21.0	51.1	171.8	198.7	314.0	314.3	321.9	246.6	60.9	10.0	0.0
		2010	0.0	0.4	111.6	501.1	476.9	574.1	400.1	634.7	584.8	179.4	11.1	24.3
		2011	3.0	0.0	39.1	114.1	561.2	517.3	639.0	630.4	305.1	201.7	0.0	0.0
		2012	25.3	24.4	9.9	461.3	231.3	447.6	306.0	548.1	516.2	229.0	31.0	-
		2013	-	2.5	8.0	98.7	939.1	339.6	532.7	509.6	392	115.5	-	-
3	Aizawl	2009	0.0	1.3	26.7	152.4	169.6	219.5	279.0	426.2	223.5	168.5	9.5	0.0
		2010	0.0	6.5	134.0	247.8	286.8	409.6	280.0	500.4	388.7	151.3	7.9	39.0
		2011	13.9	0.5	80.9	109.7	294.3	297.3	257.1	335.4	293.5	86.5	0.0	0.8
		2012	15.8	25.2	42.0	345.3	242.2	437.7	255.2	473.7	407.5	135.2	86.7	-
		2013	-	2.75	8.9	84.2	423.5	225	271.7	444.5	379.5	375.7	-	-
4	Champhai	2009	0.0	0.0	12.2	84.3	102.6	282.2	187.5	386.1	329.5	157.2	24.2	0.0
		2010	0.0	0.0	138.1	182.8	246.7	353.8	436.9	282.9	480.0	268.3	18.3	71.3
		2011	15.9	0.0	54.9	102.2	248.9	350.6	319.9	294.1	234.3	146.3	2.9	0.0
		2012	14.3	24.3	12.0	292.2	142.0	425.5	189.5	321.7	297.9	142.2	46.2	-
		2013	-	0.5	7.3	59.4	378.3	288.1	267.4	486.5	263.2	126.5	-	-
5	Serchhip	2009	0.0	0.0	13.0	66.4	147.0	258.0	292.0	420.4	120.4	126.0	34.0	0.0
		2010	0.0	0.0	124.1	120.6	298.6	411.9	352.0	373.3	338.0	253.5	25.5	63.5
		2011	14.0	14.0	64.4	58.3	320.2	466.5	211.4	392.5	299.1	109.7	0.0	0.0
		2012	-	9.0	1.8	233.7	114.6	487.9	299.2	246.8	151.0	109.1	99.1	-
		2013	-	-	-	35.55	424	244.5	245.2	321.2	189.6	179.5	-	-

<i>Sl No.</i>	<i>Name of District</i>	<i>Year</i>	<i>Jan</i>	<i>Feb</i>	<i>Mar</i>	<i>April</i>	<i>May</i>	<i>June</i>	<i>July</i>	<i>Aug</i>	<i>Sept</i>	<i>Oct</i>	<i>Nov</i>	<i>Dec</i>
1	2		3	4	5	6	7	8	9	10	11	12	13	14
6	Lunglei	2009	0.0	0.0	0.0	86.9	102.3	398.7	502.7	539.3	431.1	163.8	89.3	0.0
		2010	0.0	0.0	37.4	63.1	328.0	587.5	542.3	669.6	435.9	268.8	17.1	63.0
		2011	28.7	0.0	93.0	104.1	519.0	475.7	322.8	576.3	415.8	165.2	0.0	0.0
		2012	0.3	5.1	40.8	251.7	298.5	674.0	330.2	372.3	341.2	254.2	68.7	-
		2013	-	1.6	2.0	68.5	447.7	347.1	305.4	395.7	520.6	224	-	-
7	Lawngtlai	2009	0.0	0.0	12.5	104.7	179.0	376.4	334.9	467.3	418.7	163.0	42.0	0.0
		2010	0.0	0.0	23.0	57.5	282.7	409.0	394.2	633.1	436.1	228.7	31.5	34.9
		2011	13.0	0.0	101.0	81.0	413.0	333.0	293.0	523.0	328.0	169.0	0.0	0.0
		2012	0.0	23.5	0.0	121.0	56.5	78.0	97.0	294.1	281.3	235.4	41.5	-
		2013	-	-	-	28.2	285.7	186.2	250.7	388	436.5	156	-	-
8	Saiha	2009	0.0	0.0	21.9	109.0	292.8	641.2	545.0	765.0	604.9	167.4	119.9	0.0
		2010	0.0	0.0	204.4	165.2	581.2	528.2	718.6	661.0	995.5	653.0	86.0	129.8
		2011	19.0	0.0	148.2	109.8	538.0	693.2	604.2	1110.2	844.3	336.8	0.0	0.0
		2012	0.0	8.2	13.6	274.9	359.0	570.0	412.4	418.0	598.2	219.9	15.2	-
		2013	-	3.1	-	49.8	395.4	377.7	622.8	1077.8	1220.2	363	10.2	-

**REPORTING CENTRE-WISE ANNUAL RAINFALL
IN MIZORAM**

Sl No.	Name of Reporting Centre	Name of District	Amount of Rainfall (in mm)				
			2009	2010	2011	2012	2013
1	2	3	5	6	7	8	
1	Reiek	Mamit	2333.0	3048.0	2911.0	3399	2909.5
2	Mamit	Mamit	3683.3	2243.5	1987.6	2201.6	2333.5
3	Zawlnuam	Mamit	1969.9	3058.0	2196.0	2018	2622
4	W.Phaileng	Mamit	-	2617.3	2305.0	2729	2322
	Average		2662.0	2741.7	2349.9	2586.9	2546.6
5	Bilkhawthlir	Kolasib	1643.9	3720.0	4253.0	3314.6	2960.1
6	Kolasib	Kolasib	1777.0	3244.6	2315.6	2585.8	2998.8
7	Bukpui	Kolasib	-	3531.0	2464.0	2590	2854.1
	Average		1710.4	3498.5	3010.9	2830.1	2937.8
8	Aibawk	Aizawl	1917.9	1516.0	852.2	2376.2	1899
9	Darlawn	Aizawl	1766.9	2899.2	2171.2	2716.7	2607
10	Thingsulthliah	Aizawl	1574.3	2226.0	1668.0	2236	1284
11	Aizawl	Aizawl	1447.0	3165.9	2386.7	2538.2	2073.7
	Average		1676.4	2451.8	1769.5	2466.8	2215.7
12	Khawzawl	Champhai	1043.1	2340.4	1544.9	1822.1	1863.2
13	Champhai	Champhai	1878.6	2723.0	2018.5	1799.9	1934.2
14	Vaphai	Champhai	1339.0	2132.0	1353.5	1671.6	1837.2
15	Ngopa	Champhai	2004.1	2720.0	2162.2	2337.2	1875.6
	Average		1566.1	2478.9	1769.8	1907.7	1877.2
16	E. Lungdar	Serchhip	-	2229.5	1959.5	1720.1	1553.5
17	Serchhip	Serchhip	1486.6	2492.0	1940.3	1784.8	1725.9
	Average		1486.6	2360.8	1949.9	1752.5	1639.5
18	Lunglei	Lunglei	2848.6	3499.5	3476.4	3286.5	2949.5
19	Hnahthial	Lunglei	1789.4	2537.5	1924.3	2105.1	2046.3
20	Lungsen	Lunglei	2303.6	3001.0	N.A.	2519	1943.
	Average		2313.9	3012.7	2700.4	2636.9	2312.6
21	Lawngtlai	Lawngtlai	2480.9	2041.0	N.A.	887.7	1768.9
22	Sangau	Lawngtlai	1716.0	3020.0	2254.0	1569	1694
	Average		2098.4	2530.5	2254.0	1228.4	1731.3
23	Saiha	Saiha	3244.9	4722.9	4403.7	2889.4	4120
	Average		3244.9	4722.9	4403.7	2889.4	4120

CENTRE-WISE MONTHLY RAINFALL RECORD (JANUARY – DECEMBER)

<i>Sl No</i>	<i>Name of District Centre</i>	<i>Year</i>	<i>Jan</i>	<i>Feb</i>	<i>Mar</i>	<i>April</i>	<i>May</i>	<i>June</i>	<i>July</i>	<i>Aug</i>	<i>Sept</i>	<i>Oct</i>	<i>Nov</i>	<i>Dec</i>	<i>Total</i>
<i>1</i>	<i>2</i>	<i>3</i>	<i>4</i>	<i>5</i>	<i>6</i>	<i>7</i>	<i>8</i>	<i>9</i>	<i>10</i>	<i>11</i>	<i>12</i>	<i>13</i>	<i>14</i>	<i>15</i>	<i>16</i>
1	MAMIT DISTRICT														
	a) Reiek	2009	0.0	0.0	54.0	213.0	281.0	496.0	358.0	445.0	252.0	194.0	40.0	0.0	2333.0
		2010	0.0	30.0	132.0	228.0	478.0	490.0	364.0	434.0	504.0	267.0	86.0	35.0	3048.0
		2011	0.0	0.0	69.0	228.0	594.0	473.0	434.0	575.0	399.0	139.0	0.0	0.0	2911.0
		2012	30.0	30.0	77.0	655.0	310.0	753.0	358.0	796.0	190.0	200.0	-	-	3399.0
		2013	0.0	0.0	1.5	117	776	442	435	568	405	165	-	-	2909.5
	b) Zawlnuam	2011	0.0	10.0	97.0	155.0	537.0	378.0	221.0	489.0	179.0	130.0	0.0	0.0	2196.0
		2012	23.0	15.0	8.0	397.0	255.0	350.0	121.0	413.0	292.0	144.0	-	-	2018.0
		2013	0.0	0.0	17	120	770	362	326	596	341	90	-	-	2622
	c) Mamit	2009	0.0	0.5	45.6	424.0	32.6	286.0	350.4	993.4	1139.0	293.0	119.0	0.0	3683.3
		2010	0.0	41.7	171.7	142.5	379.9	281.0	281.0	362.7	341.4	190.0	0.0	51.6	2243.5
		2011	2.0	0.0	67.2	171.4	354.0	304.5	271.3	430.3	287.9	99.0	0.0	0.0	1987.6
		2012	70.2	26.0	25.0	379.0	194.4	528.1	102.6	430.2	249.1	151.2	45.8	-	2201.6
		2013	0.0	0.0	7	93	640.2	231.2	325	466	435.1	136	-	-	2333.5
	d) W.Phaileng	2012	11.0	14.0	24.0	325.0	174.0	500.0	308.0	520.0	254.0	445.0	154.0	-	2729.0
		2013	-	5.0	21.0	72.0	619	310	192	515	446	142	-	-	2322
2	KOLASIB DISTRICT														
	a) Bilkhawthlir	2009	0.0	18.0	52.0	142.0	200.9	325.0	313.0	383.0	196.0	0.0	14.0	0.0	1643.8
		2010	0.0	0.0	104.0	459.0	624.0	730.0	368.0	490.0	783.0	162.0	0.0	0.0	3720.0
		2011	0.0	0.0	78.0	83.0	682.0	728.0	1139.0	792.0	379.0	372.0	0.0	0.0	4253.0
		2012	50.0	18.0	0.0	867.0	368.5	557.5	292.0	480.4	358.0	315.0	8.2	-	3314.6
		2013	-	-	7	107	1084.9	330.6	699	320	292.3	119.3	-	-	2960.1

Contd...

CENTRE-WISE MONTHLY RAINFALL RECORD (JANUARY – DECEMBER)

<i>Sl No</i>	<i>Name of District Centre</i>	<i>Year</i>	<i>Jan</i>	<i>Feb</i>	<i>Mar</i>	<i>April</i>	<i>May</i>	<i>June</i>	<i>July</i>	<i>Aug</i>	<i>Sept</i>	<i>Oct</i>	<i>Nov</i>	<i>Dec</i>	<i>Total</i>
<i>1</i>	<i>2</i>	<i>3</i>	<i>4</i>	<i>5</i>	<i>6</i>	<i>7</i>	<i>8</i>	<i>9</i>	<i>10</i>	<i>11</i>	<i>12</i>	<i>13</i>	<i>14</i>	<i>15</i>	<i>16</i>
	b) Kolasib	2009	0.0	24.0	50.2	201.7	196.8	303.0	315.8	260.9	297.2	121.9	6.0	0.0	1777.0
		2010	0.0	1.2	230.8	522.4	350.9	518.2	358.3	650.0	443.4	159.2	5.2	5.0	3244.6
		2011	0.0	0.0	8.2	138.4	474.6	388.8	433.1	579.2	161.2	132.1	0.0	0.0	2315.6
		2012	25.8	55.2	29.6	517.0	153.4	438.4	289.0	413	515.6	125.0	23.8	-	2585.8
		2013	-	7.5	12	79	883.8	320.2	432.9	665.6	499.6	98.2	-	-	2998.8
	c) Bukpui	2012	NA	NA	NA	NA	172.0	347.0	337.0	751.0	675.0	247.0	61.0	-	2590.0
		2013	-	-	5.0	110	848.6	368	466.4	543.1	384	129	-	-	2854.1
3	AIZAWL														
	a) Aibawk	2009	0.0	0.0	29.0	78.1	230.0	230.6	283.0	618.0	248.8	163.0	38.0	0.0	1917.9
		2010	0.0	0.0	118.0	133.0	241.0	351.1	213.8	192.9	198.3	59.9	5.0	3.0	1516.0
		2011	6.1	0.0	91.2	92.4	144.5	167.4	117.6	178.1	54.9	0.0	0.0	0.0	852.2
		2012	20.0	13.0	80.1	232.1	253.0	471.0	235.0	595.0	330.0	123.0	24.0	-	2376.2
		2013	-	-	-	24	296	129	-	624	601	225	-	-	1899
	b) Darlawn	2009	0.0	5.5	19.0	207.2	202.2	235.0	318.0	468.0	186.0	125.9	0.0	0.0	1766.9
		2010	0.0	0.0	175.0	399.0	264.0	415.0	292.0	601.7	494.3	177.0	0.0	81.2	2899.2
		2011	35.4	2.0	75.2	166.4	393.5	377.7	456.0	305.0	291.0	69.0	0.0	0.0	2171.2
		2012	24.0	16.0	9.0	526.0	224.0	348.0	380.0	411.0	540.0	141.0	97.7	-	2716.7
		2013	-	8	22	128	718	323	463	505	362	78	-	-	2607
	c) Thingsulthliah	2009	0.0	0.0	24.10	98.6	44.4	244.6	266.2	498.0	253.4	145.2	0.0	0.0	1574.3
		2010	0.0	10.0	81.0	179.0	261.0	387.0	368.0	303.0	401.0	160.0	15.0	61.0	2226.0
		2011	3.0	0.0	80.0	91.0	229.0	261.0	152.0	357.0	308.0	184.0	0.0	3.0	1668.0
		2012	NA	30.0	17.0	323.0	282.0	358.0	197.0	503.0	361.0	83.0	82.0	-	2236.0
		2013	-	-	4	75	190	234	308	206	168	99	-	-	1284

Contd...

CENTRE-WISE MONTHLY RAINFALL RECORD (JANUARY – DECEMBER)

<i>Sl No</i>	<i>Name of District Centre</i>	<i>Year</i>	<i>Jan</i>	<i>Feb</i>	<i>Mar</i>	<i>April</i>	<i>May</i>	<i>June</i>	<i>July</i>	<i>Aug</i>	<i>Sept</i>	<i>Oct</i>	<i>Nov</i>	<i>Dec</i>	<i>Total</i>
<i>1</i>	<i>2</i>	<i>3</i>	<i>4</i>	<i>5</i>	<i>6</i>	<i>7</i>	<i>8</i>	<i>9</i>	<i>10</i>	<i>11</i>	<i>12</i>	<i>13</i>	<i>14</i>	<i>15</i>	<i>16</i>
	d) Aizawl	2009	0.0	0.0	35.0	226.0	202.0	168.0	249.0	121.0	206.0	240.0	0.0	0.0	1447.0
		2010	0.0	16.0	162.0	280.0	381.0	485.0	246.0	904.0	461.0	208.4	11.6	10.9	3165.9
		2011	11.0	0.0	77.0	89.0	410.0	383.1	302.6	501.3	519.9	92.8	0.0	0.0	2386.7
		2012	19.2	42.0	62.0	300.3	209.7	574.0	209.0	386.0	399.0	194.0	143.0	-	2538.2
		2013	-	3	9.7	110	490	214	316	443	387	101	-	-	2073.7
4	CHAMPHAI														
	a) Khawzawl	2009	0.0	0.0	0.0	0.0	0.0	96.0	20.90	267.1	430.2	203.4	25.6	0.0	1043.1
		2010	0.0	0.0	78.7	67.2	227.8	525.0	358.4	287.8	370.0	378.5	21.0	26.0	2340.4
		2011	26.4	0.0	61.0	59.6	224.4	370.2	217.6	321.9	189.2	74.6	0.0	0.0	1544.9
		2012	1.5	1.0	0.5	366.0	82.0	439.0	345.0	202.1	202.1	156.4	26.5	-	1822.1
		2013	-	-	4	52.6	377.3	357	232	566	274.3	-	-	-	1863.2
	b) Champhai	2009	0.0	0.0	18.0	112.3	113.0	378.0	271.3	448.0	300.0	197.0	40.9	0.0	1878.6
		2010	0.0	0.0	142.0	200.0	292.0	318.0	439.0	313.0	653.0	276.0	15.0	75.0	2723.0
		2011	37.0	0.0	53.0	122.0	266.0	436.9	342.8	267.5	217.0	276.3	0.0	0.0	2018.5
		2012	11.1	46.0	8.4	326.6	83.6	420.1	177.3	343.5	164.2	160.2	58.9	-	1799.9
		2013	-	2.1	6	58.1	461.9	252.8	267.7	438	274.6	173	-	-	1934.2
	c) Vaphai	2009	0.0	0.0	0.0	53.0	83.0	303.0	211.0	358.0	264.0	55.0	12.0	0.0	1339.0
		2010	0.0	0.0	77.0	128.0	162.0	307.0	478.0	298.0	348.0	228.0	27.0	79.0	2132.0
		2011	0.0	0.0	13.0	84.0	175.0	253.0	295.5	173.0	220.0	140.0	0.0	0.0	1353.5
		2012	44.5	35.0	39.0	199.0	209.0	334.0	105.1	337.0	204.0	124.6	40.4	-	1671.6
		2013	-	-	3.3	25.6	314.9	376.4	302	377	276	162	-	-	1837.2

Contd...

CENTRE-WISE MONTHLY RAINFALL RECORD (JANUARY – DECEMBER)

Sl No	Name of District Centre	Year	Jan	Feb	Mar	April	May	June	July	Aug	Sept	Oct	Nov	Dec	Total
1	2	3	4	5	6	7	8	9	10	11	12	13	14	15	16
	d) Ngopa	2009	0.0	0.0	31.0	172.2	214.7	351.9	247.0	471.3	324.1	173.4	18.7	0.0	2004.1
		2010	0.0	0.0	254.5	336.0	305.0	265.0	472.0	232.7	549.0	190.6	10.2	105.0	2720.0
		2011	0.0	0.0	92.4	143.1	330.5	342.2	423.6	414.0	310.9	94.1	11.4	0.0	2162.2
		2012	0.0	15.2	0.0	277.1	193.5	508.8	130.7	404.1	621.3	127.5	59.0	-	2337.2
		2013	-	-	16.2	101.6	359.1	166.4	268.1	565	228.2	171	-	-	1875.6
5	SERCHHIP														
	a) Serchhip	2009	0.0	0.0	22.2	66.4	147.0	258.0	292.0	420.4	120.4	126.0	34.0	0.0	1486.6
		2010	0.0	0.0	77.2	100.1	366.1	443.2	337.4	429.0	443.0	227.0	6.0	63.0	2492.0
		2011	0.0	0.0	71.8	83.6	340.0	493.0	187.0	385.8	337.7	41.4	0.0	0.0	1940.3
		2012	0.0	8.0	3.6	117.4	114.0	655.9	384.1	301.6	-	52.2	148.0	-	1784.8
		2013	-	-	-	18.1	374	290	149	285	379.3	58.1	-	-	1553.5
	b) E.Lungdar	2012	0.0	10.0	0.0	350.0	115.2	320.0	214.3	192.0	302.0	166.3	50.3	-	1720.1
		2013	-	-	-	53	474.1	199	341.4	357.4	-	301	-	-	1725.9
6	LUNGLEI DISTRICT														
	a) Lunglei	2009	0.0	0.0	0.0	173.4	146.0	449.8	574.6	735.4	449.9	200.8	119.0	0.0	2848.6
		2010	0.0	0.0	112.1	51.2	529.0	562.8	497.9	710.3	541.5	349.4	31.3	114.0	3499.5
		2011	44.0	0.0	144.9	127.2	725.6	573.2	437.2	751.2	485.0	188.1	0.0	0.0	3476.4
		2012	1.0	10.3	39.3	299.2	318.4	842.2	516.3	593.2	291.3	295.3	81.0	-	3287.5
		2013	-	3	-	75.3	515.4	495.4	428.2	484	598	350.2	-	-	2949.5
	b) Hnahthial	2009	0.0	0.0	0.0	0.0	148.1	368.2	303.6	379.7	377.0	145.0	68.0	0.0	1789.4
		2010	0.0	0.0	0.0	104.0	206.0	526.7	381.0	576.5	405.3	258.0	5.0	75.0	2537.5
		2011	13.4	0.0	41.1	81.0	312.3	378.1	208.3	401.3	346.5	142.3	0.0	0.0	1924.3
		2012	0.0	0.0	42.0	223.8	347.1	550.9	109.4	254.3	317.2	200.4	60.0	-	2105.1
		2013	-	-	6	75.3	453.8	281.1	233	369.1	445	183	-	-	2046.3

Contd...

CENTRE-WISE MONTHLY RAINFALL RECORD (JANUARY – DECEMBER)

<i>Sl No</i>	<i>Name of District Centre</i>	<i>Year</i>	<i>Jan</i>	<i>Feb</i>	<i>Mar</i>	<i>April</i>	<i>May</i>	<i>June</i>	<i>July</i>	<i>Aug</i>	<i>Sept</i>	<i>Oct</i>	<i>Nov</i>	<i>Dec</i>	<i>Total</i>
<i>1</i>	<i>2</i>	<i>3</i>	<i>4</i>	<i>5</i>	<i>6</i>	<i>7</i>	<i>8</i>	<i>9</i>	<i>10</i>	<i>11</i>	<i>12</i>	<i>13</i>	<i>14</i>	<i>15</i>	<i>16</i>
	c) Lungsen	2009	0.0	0.0	0.0	87.0	13.0	378.0	630.0	503.0	466.0	145.5	81.0	0.0	2303.5
		2010	0.0	0.0	0.0	34.0	249.0	673.0	748.0	722.0	361.0	199.0	15.0	0.0	3001.0
		2011	N.A	N.A	N.A	N.A	N.A	N.A	N.A	N.A	N.A	N.A	N.A	N.A	N.A
		2012	0.0	5.0	41.0	232.0	230.0	629.0	365.0	269.0	416.0	267.0	65.0	-	2519.0
		2013	-	2	-	55	374	265	255	334	519	139	-	-	1943
7	LAWNGTLAI DISTRICT														
	a) Lawngtlai	2009	0.0	0.0	12.0	123.2	181.0	449.9	400.8	552.8	562.3	151.0	48.1	0.0	2480.9
		2010	0.0	0.0	0.0	33.0	261.4	423.9	352.3	482.2	271.2	170.3	32.0	14.7	2041.0
		2011	N.A	N.A	N.A	N.A	N.A	N.A	N.A	N.A	N.A	N.A	N.A	N.A	N.A
		2012	NA	NA	NA	NA	NA	vNA	NA	364.2	278.7	244.8	NA	NA	887.7
		2013	-	-	-	50.5	330.5	105.5	254.4	428	399	201	-	-	1768.9
	b) Sangau	2009	0.0	0.0	13.0	86.00	177.0	303.0	269.0	382.0	275.0	175.0	36.0	0.0	1716.0
		2010	0.0	0.0	46.0	82.0	304.0	394.0	436.0	784.0	601.0	287.0	31.0	55.0	3020.0
		2011	13.0	0.0	101.0	81.0	413.0	333.0	293.0	523.0	328.0	169.0	0.0	0.0	2254.0
		2012	0.0	47.0	0.0	242.0	113.0	156.0	194.0	224.0	284.0	226.0	83.0	-	1569.0
		2013	-	-	-	6	241	267	247	348	474	111	-	-	1694
8	SAIHA DISTRICT														
	a) Saiha	2009	0.0	0.0	0.0	109.00	292.70	641.20	545.00	765.0	604.9	167.4	119.9	0.0	3244.9
		2010	0.0	0.0	204.4	165.2	581.2	528.2	718.6	661.0	995.5	653.0	86.0	129.8	4722.9
		2011	19.0	0.0	148.2	109.8	538.0	693.2	604.2	1110.2	844.3	336.8	0.0	0.0	4403.7
		2012	0.0	8.2	13.6	274.9	359.0	570.0	412.4	418.0	598.2	219.9	15.2	-	2889.4
		2013	-	3.1	-	49.8	395.4	377.7	622.8	1077.8	1220.2	363	10.2	-	4120

Contd...

**AVERAGE RAINFALL DURING DIFFERENT SEASONS
IN MIZORAM**

Sl No.	Seasons	Rainfall (in mm)					Percentage to total annual rainfall				
		2009	2010	2011	2012	2013	2009	2010	2011	2012	2013
<i>1</i>	<i>2</i>	<i>3</i>	<i>4</i>	<i>5</i>	<i>6</i>	<i>7</i>	<i>8</i>	<i>9</i>	<i>10</i>	<i>11</i>	<i>12</i>
1	Winter (Nov-Jan)	42.1	87.2	14.2	66.3	1.3	2.0	2.9	0.6	2.9	0.05
2	Spring (Feb-April)	166.3	322.1	190.8	339.2	72.0	8.2	10.9	7.6	14.9	2.97
3	Summer (May-Aug)	1278.8	1786.4	1781.4	1332.2	1664.1	63.6	60.0	70.6	58.2	68.7
4	Autumn (Sept-Oct)	525.1	779.2	540.0	550.0	685.2	26.1	26.1	21.3	24.0	28.28

**TEMPERATURE DURING DIFFERENT SEASONS
(in degree celcius) °C in AIZAWL CITY**

Sl No.	Seasons	Minimum					Maximum				
		2009	2010	2011	2012	2013	2009	2010	2011	2012	2013
<i>1</i>	<i>2</i>	<i>3</i>	<i>4</i>	<i>5</i>	<i>6</i>	<i>7</i>	<i>8</i>	<i>9</i>	<i>10</i>	<i>11</i>	<i>12</i>
1	Winter (Nov-Jan)	14.6	14.2	13.5	13.3	12.44	25.0	25.4	25.0	23.8	18.6
2	Spring (Feb-April)	17.9	17.5	16.0	16.7	16.39	28.5	27.9	27.5	27.4	24.51
3	Summer (May-Aug)	20.6	20.0	19.9	19.9	19.13	27.8	26.3	27.3	27.6	28.61
4	Autumn (Sept-Oct)	20.3	19.8	19.6	19.1	18.89	28.2	27.8	27.8	26.3	28.25

MONTH-WISE RELATIVE HUMIDITY IN AIZAWL CITY

Sl No.	Month	Relative Humidity in %									
		Maximum					Minimum				
		2009	2010	2011	2012	2013	2009	2010	2011	2012	2013
<i>1</i>	<i>2</i>	<i>3</i>	<i>4</i>	<i>5</i>	<i>6</i>	<i>7</i>	<i>8</i>	<i>9</i>	<i>10</i>	<i>11</i>	<i>12</i>
1	January	82	82	79	81.99	34.95	52	38	38	33.11	80.99
2	February	70	89	73	63.08	27.82	34	42	33	27.78	66.56
3	March	84	96	72	71.44	24.74	20	32	36	33.00	60.63
4	April	96	98	82	87.94	N.A	44	45	41	51.16	N.A
5	May	98	100	95	89.37	56.50	64	72	60	55.71	86.33
6	June	97	100	95	95.99	N.A	75	82	68	70.92	N.A
7	July	97	98	96	95.77	61.21	74	85	75	68.90	92.42
8	August	100	98	96	97.87	63.88	78	88	69	68.28	89.06
9	September	98	100	97	97.75	63.48	70	81	69	67.81	92.48
10	October	96	100	96	97.44	58.67	64	69	60	61.50	90.42
11	November	100	96	93	95.69	33.28	55	64	43	59.81	82.71
12	December	86	100	80	82.32	33.71	57	52	38	33.93	80.83
	Average	92	96	88	88.05	45.82	57	63	53	52.65	82.24

**MONTH-WISE MINIMUM AND MAXIMUM AVERAGE TEMPERATURE IN
AIZAWL CITY (in °C)**

MONTH	MINIMUM					MAXIMUM				
	2009	2010	2011	2012	2013	2009	2010	2011	2012	2013
<i>1</i>	<i>2</i>	<i>3</i>	<i>4</i>	<i>5</i>	<i>6</i>	<i>7</i>	<i>8</i>	<i>9</i>	<i>10</i>	<i>11</i>
January	13.33	13.7	10.9	12.8	10.55	24.42	25.9	22.8	23.24	22.83
February	15.56	14.6	13.6	14.15	14.60	26.99	25.7	25.5	26.13	27.70
March	18.80	18.8	16.2	16.96	17.37	28.85	29.4	28.3	28.71	30.04
April	19.57	19.0	18.1	17.11	17.22	29.67	28.7	28.6	27.35	29.46
May	19.77	19.9	18.3	19.57	17.36	28.77	26.6	27.2	28.38	26.40
June	20.49	20.1	20.4	19.89	20.12	27.39	26.1	27.3	26.53	27.89
July	21.02	19.5	20.4	20.00	19.63	27.90	25.0	27.1	27.35	27.47
August	20.83	20.5	20.4	19.98	19.43	27.02	27.4	27.4	27.80	26.14
September	20.79	20.0	20.2	19.93	19.19	28.24	27.3	27.8	27.38	26.73
October	19.87	19.5	19.3	18.45	18.60	28.33	28.3	27.7	25.34	25.46
November	17.18	16.2	16.2	15.16	15.07	26.54	26.2	27.5	23.35	28.32
December	13.15	12.7	13.5	11.90	11.71	24.08	24.2	24.6	24.20	23.44

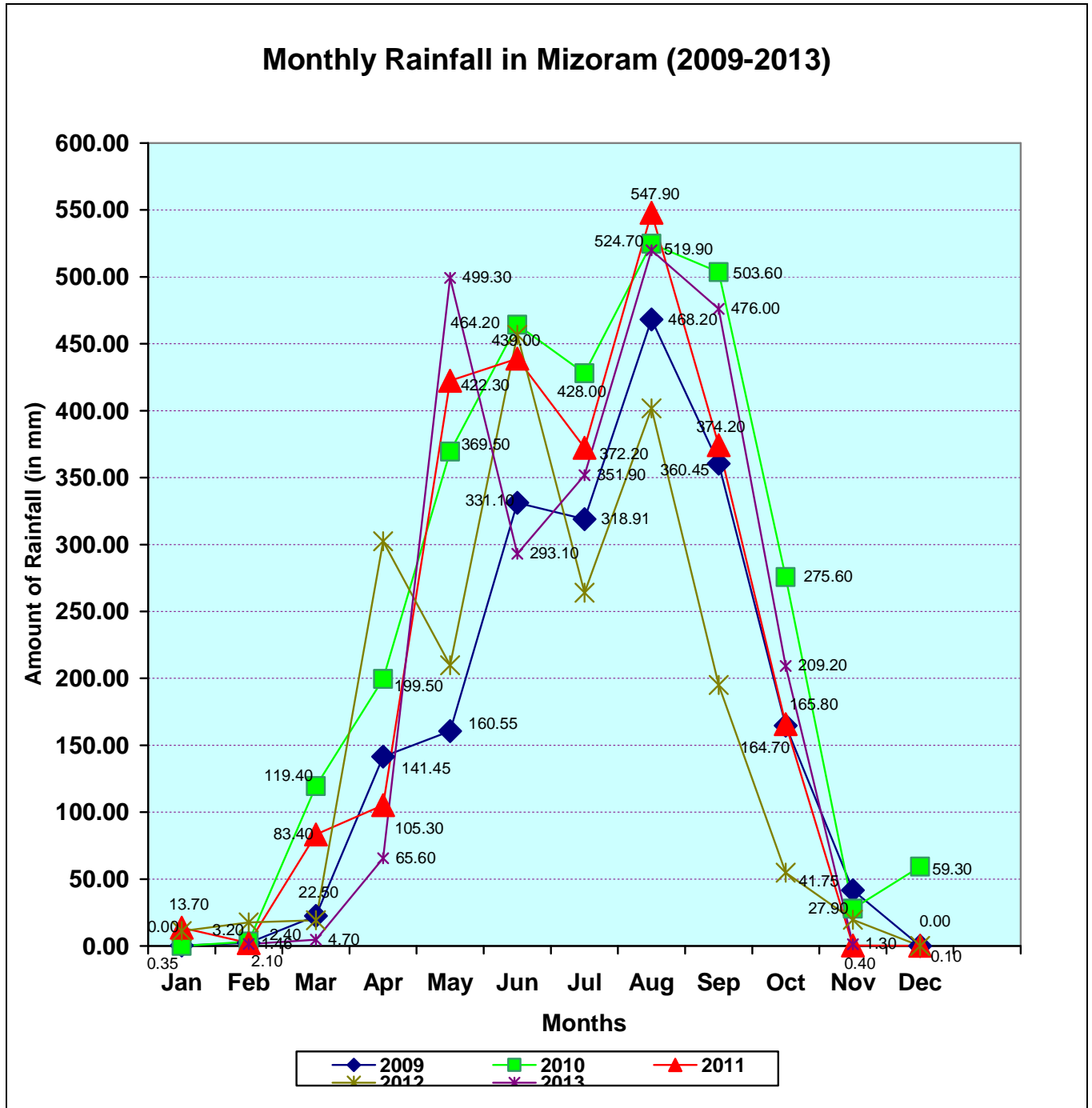
HOTTEST DAY

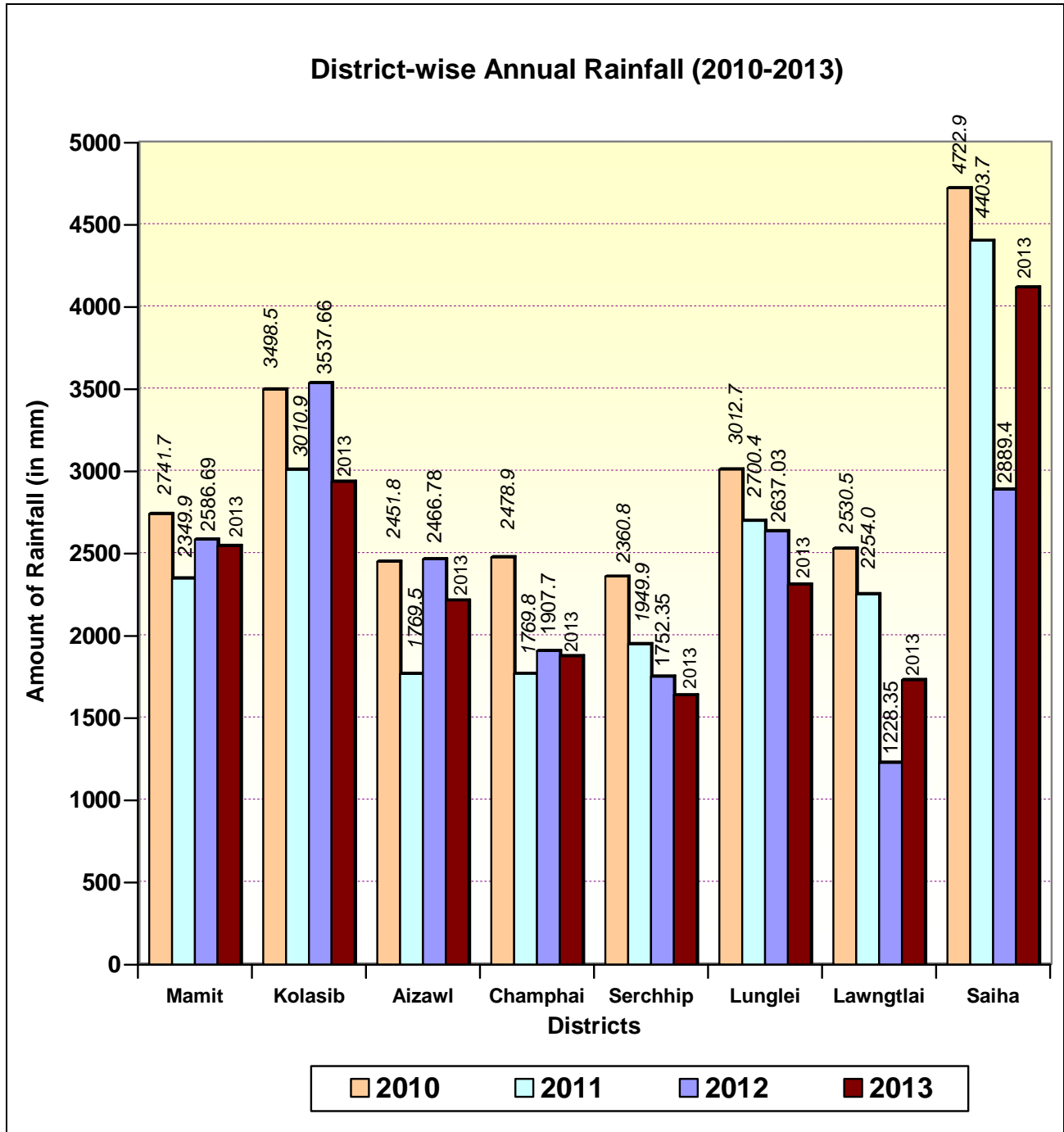
(11th April 2013= 34.5°C)

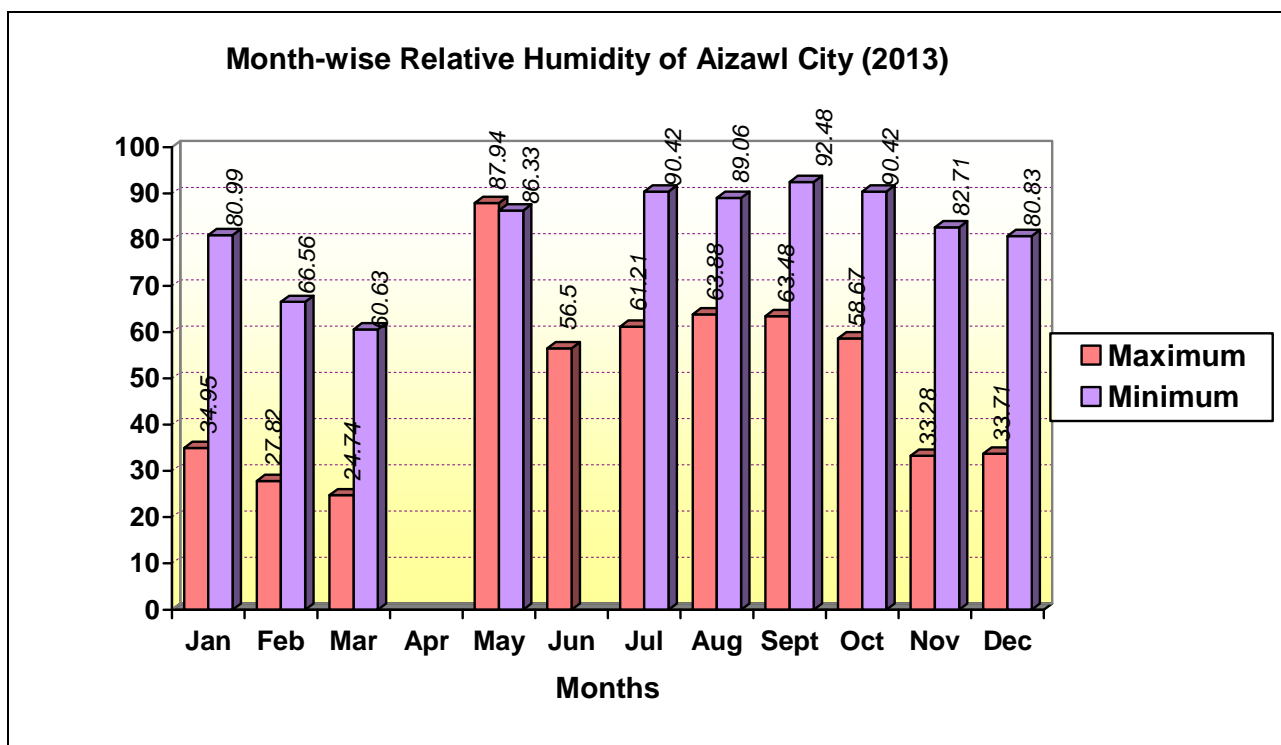
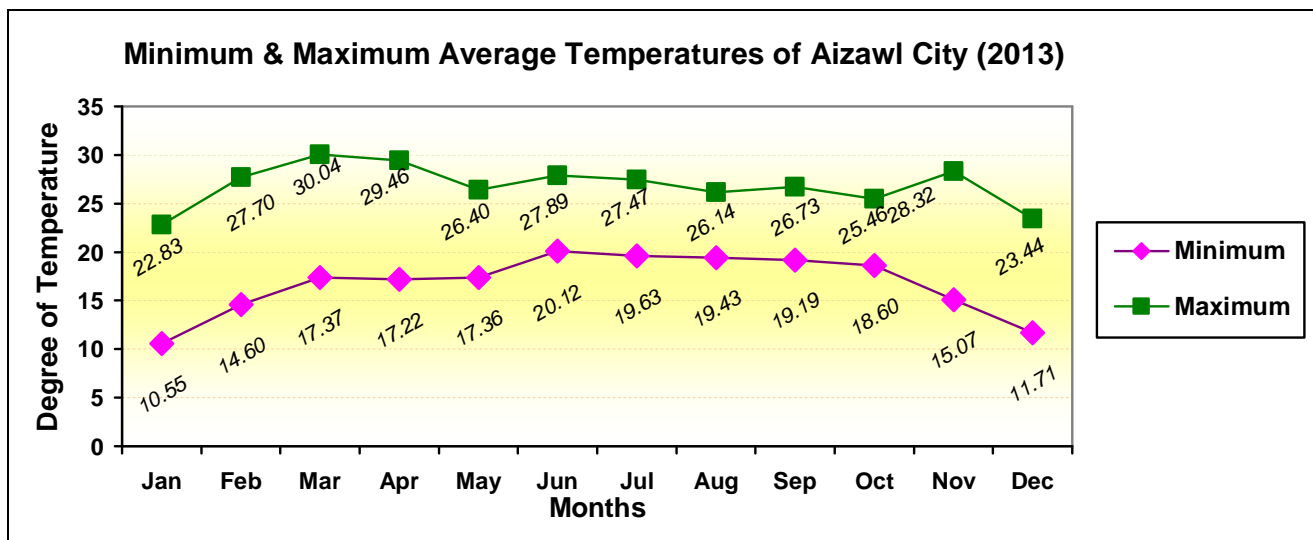
COLDEST DAY

(11th January 2013 = 5.6°C)

CHART

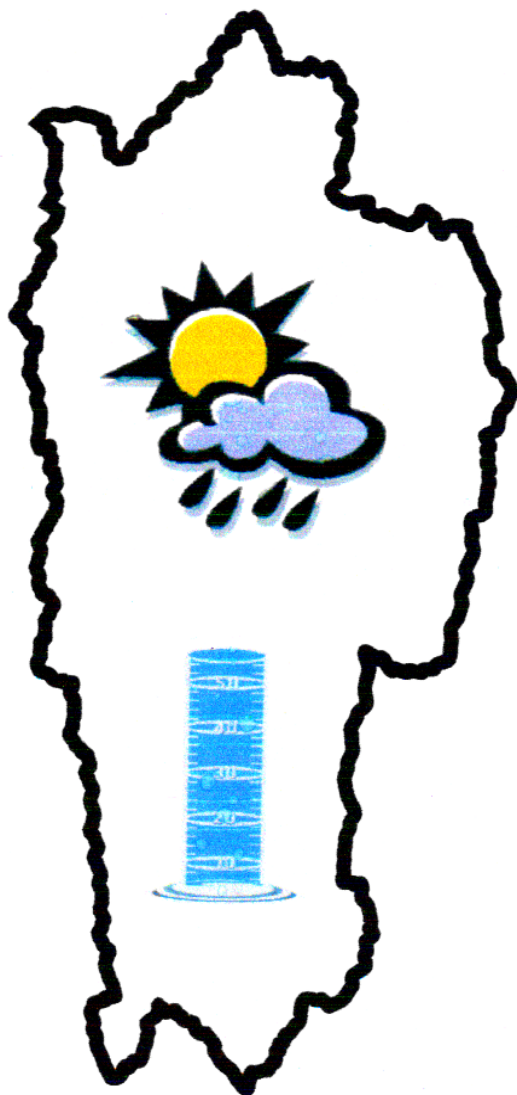








METEOROLOGICAL DATA OF MIZORAM 2013



**Government of Mizoram
Directorate of Economics & Statistics
Mizoram : Aizawl.**